



Anna Olava

Hat



Size:	Female
Yarn:	Ca. 70 g HS Peruvian Ca. 20 g HS Silk Mohair
Needles:	Ca. 4 and 4,5 mm
Gauge:	17/10

Pattern:

Cast on 80 stitches with 1 strand Peruvian wool and 1 strand of silk mohair on needle size 4mm using the Italian cast on method.

For a double folded brim knit rib (knit 1, purl 1) until 16 cm, or 8 cm if you want a single layer brim. If you prefer to knit a twisted ribbing, remember to twist both knit stitches and purl stitches if you want a double folded brim.

Change to needle size 4.5 mm and knit pattern according to the chart.

Chart:







Repeat the chart 4 times in width and 2 times in height (rounds 1 to 20). Try on for size. For a slightly baggier hat, repeat rounds 1 to 20. Move the marker at the beginning of the round when you need to knit 3 stitches together.

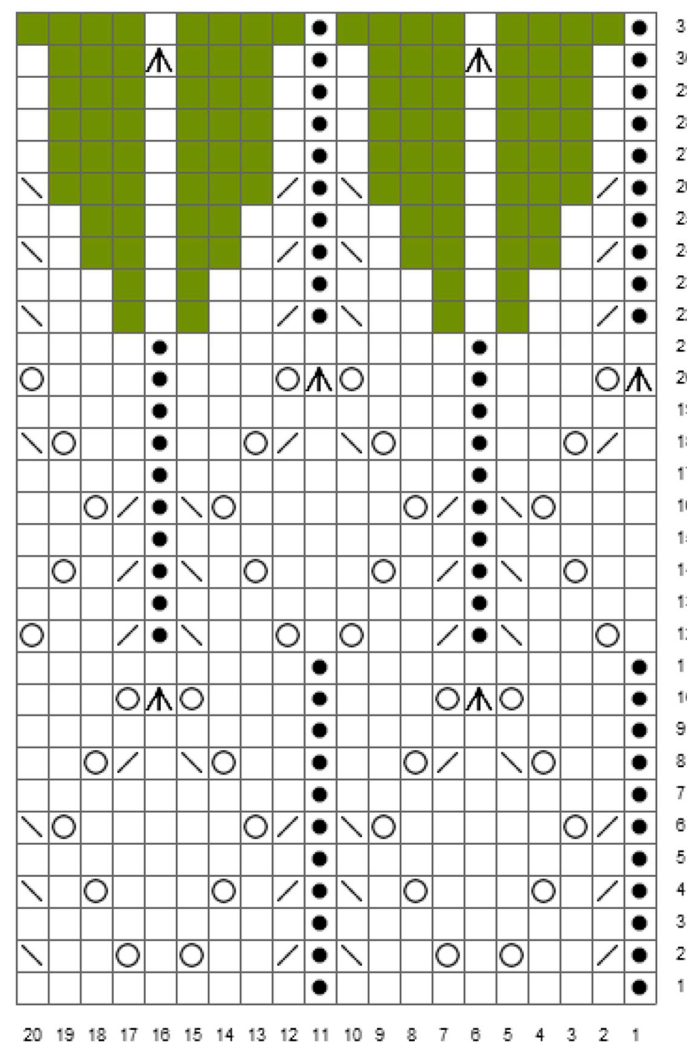
Decrease:

Decrease = rounds 22-31. You decrease by skipping the yarn overs in the pattern repeat. The green boxes in the pattern indicate decrease stitches.

Knit 1, purl 1 throughout the last round (Round 31).

Cut yarn and pull thread through remaining stitches. Fasten all loose ends.

-  = Knit
-  = Left leaning decrease (S1K1psso or SSK)
-  = k2tog
-  = Yarn Over
-  = Purl
-  = sl 1 sts , k2tog, lift the sl sts over



I would love to see your finished hat on Instagram! Please tagg @hettestrikk / #annaolavahals / #annaolavapanneband Good luck! ♥

Elisabeth

Translated @becks1975