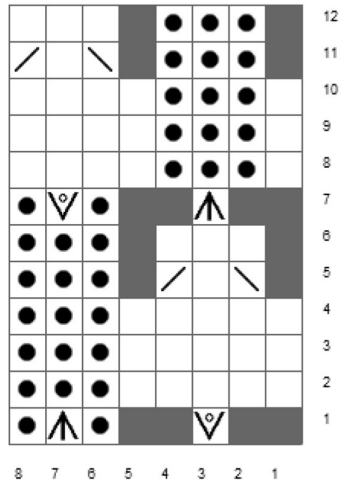




# Chestnut

## Cowl

Diagram:



- = Knit
- = Left leaning decrease (SSK)
- = k2tog
- = Purl
- = k1, yo, k1, yo, k1 into the same stitch = 5 sts
- = sl 1 sts, k2tog, p1sso



- Size:** One size
- Yarn:** Approx. 40 g HS Angel and ca. 20 g HS Silk Mohair (suggestion)
- Needles:** Ca. 4 mm
- Gauge:** Ca. 20/10 (Regardless of gauge)

This pattern came about because I became completely obsessed with the color and shape of chestnuts! Also, I've been thinking for a long time that I would like to make a thinner version of Anna Olava cowl. I really wanted us to use up some leftover yarn, so the pattern is written regardless of your knitting tension. That's why you start at the tip. You knit back and forth until you have a piece about 45 - 50 cm wide. Then you join the cowl by casting on stitches for the neck, and finally knitting in the round until the desired length of neck. Alternatively, you can bind off when you run out of yarn. The chart is read from right to left on the right side, and from left to right on the wrong side. Start your knitting by following the written pattern, and as you get the hang of it you can put the pattern away and just knit. You can, of course, take a peek at the chart every now and again just to check on your chestnuts. If you make sure to tuck in all the fastens threads neatly, your cowl will look just as nice on the inside and outside!

### Fade:

If you want to use leftover yarn to create a fade, do as follows: Start with light yarn. Knit until round 7. Change one strand to a little darker. Knit to round 1 again, change the other thread. Continue like this and switch to a slightly darker thread on round 1 and round 7.

### Abbreviations:

**ssk** = slip, slip, knit slipped stitches twisted together

**Ktog** = knit 2 together

**5x** = Knit 1, slip 1, knit 1, slip 1, knit 1 in the same stitch (= 1 chestnut)

**7x** = knit 1, slip 1, knit 1 twisted stitch, slip 1, knit 1, slip 1, knit 1 in the same stitch (= 1 chestnut and 2 side stitches kastanje)

**ws** = wrong side

**rs** = right side



### Pattern:

Cast on 5 stitches with 1 thread HS Angel and 1 thread HS silk mohair (or your preferred yarn) using needle size 4. Turn to start on the right side.

Round 1 rs: purl 2, **5x**, purl 2 = 9 stitches, turn

Round 2 ws: knit 2, purl 5, knit 2, turn

Round 3 rs: purl 2, knit 5, purl 2, turn

Round 4 ws: knit 2, purl 5, knit 2, turn

Round 5 rs: purl 2, ssk, knit 1, ktog, purl 2 = 7 stitches, turn

Round 6 ws: knit 2, purl 3, knit 2, turn

Round 7 rs: **7x**, purl 1, slip 1, ktog, lift the slipped stitch back over, purl 1, **7x** = 17 stitches, turn

Round 8 ws: knit 2, purl 5, knit 3, purl 5, knit 2, turn

Round 9 rs: purl 2, knit 5, purl 3, knit 5, purl 2, turn

Round 10 ws: knit 2, purl 5, knit 3, purl 5, knit 2, turn

Round 11 rs: purl 2, ssk, knit 1, ktog, purl 3, ssk, knit 1, ktog, purl 2 = 13 stitches, turn

Round 14 ws: knit 2, purl 3, knit 3, purl 3, knit 2, turn

Round 15 rs: **7x**, purl 1, lift 1, ktog, lift the slipped stitch back over, purl 1, **5x**, purl 1, lift 1, ktog, lift the slipped stitch back over, purl 1, **7x** = 25 stitches, turn

Continue knitting by adding 1 chestnut to each side of your work until the cowl measures about 45 cm in width (or your desired width). On round 3 or 9, cast on 31 stitches at the end of the round and join the work together to continue knitting in the round. If your knitting tension is different, cast on stitches until you have added about 12 cm in the neck. Your total number of stitches should be dividable by 8 + 7 extra stitches.

### Neck:

Continue knitting in the round according to the chart until you have 5 - 6 rows of chestnuts after joining for the neck (Approx. 12 - 15 cm). Finish after round 5 or 11. Knit 3 rounds stockinette stitch. Bind off and you have a small rolling edge. If you want to use the neck on both sides, skip the 3 rounds of stockinette stitch so that your edge does not curl.

I would love to see your finished cowl on Instagram!

Tag #chestnutcowl @hettestrikk if you want. Good luck!

Elisabeth