



Harbour

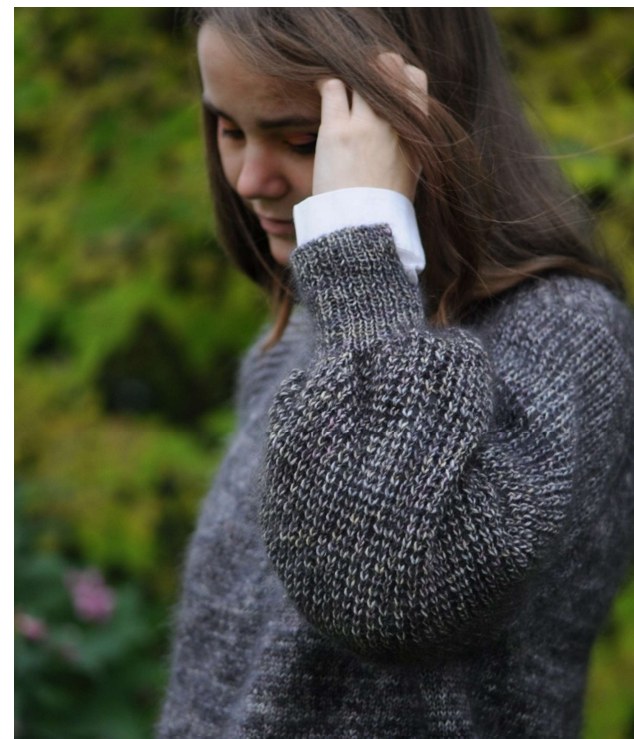
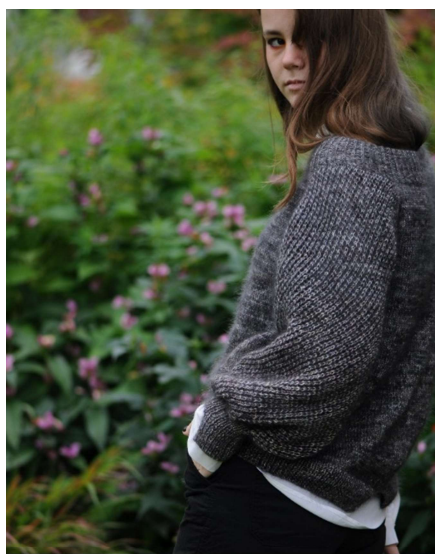
Sweater

Abbreviations

| | |
|---------------------------|-----------------------------------|
| K = Knit | Mds = Make double stitch |
| P = Purl | Ds = Double stitch |
| Rnd(s) = Round(s) | Dec = Decrease |
| St(s) = Stitch(es) | Inc = Increase |
| Rpt = Repeat | Bor = Beginning of round |
| SM = Stitch Marker | 2tog = Knit 2 sts together |
| Yo = Yarn over | CO = Cast on |
| RS = Right side | WS = Wrong side |

I would love to see your finished product on Instagram! Tag @hettestrikk and #harboursweater if you want.

Elisabeth



| | |
|--------------------------|---|
| Size: | XS - S - M - L - XL - XXL |
| Bust measurement: | 84 cm - 92 cm - 100 cm - 108 cm - 118 cm - 129 cm |
| Yarn: | HS Soft Sock together with HS Silk Mohair, or other similar yarn (425m/100gr & 420/50gr) |
| Meterage: | 300g + 150g - 300g + 150g - 300g + 150g - 300g + 150g 400g + 200g - 450g + 250g |
| Needle size: | 3,5mm and 4mm |
| Gauge: | 22/10 |

This sweater is knitted top down with raglan increases. The sleeves are knitted with a simple lace pattern, while the rest of the body is knitted in stockinette stitch. Balloon sleeves and tubular cast on and bind off, short rows to make the back longer and a slit on the back and sleeves are nice details.

Neck band

Cast on 108 - **112** - 120 - **124** - 132 - **136** sts with needlesize 3,5 using tubular cast on.

Youtube video:

<https://www.youtube.com/watch?v=WZQFtdlp1Q>

Place 1sm, this will indicate BOR and will be in the middle back, let this sm stay put for the whole sweater.

Knit rib, (k1, p1) for 7 cm.

K 1 rnd where you evenly incr. 54 - **56** - 60 - **62** - 66 - **69** sts

= 162 - **168** - 180 - **186** - 198 - **204** sts.

Lace pattern

Rnd 1: *2tog, 1YO* to the end of rnd.

Rnd 2: Knit

Rpt these two rnds. Make sure that the "holes" stay on a diagonal line. That will mean that when you knit 2tog they will be the same 2tog as the rnd before. See the picture. **Remember to always dec as many sts as you inc to keep the same stitch number. If you only have one st before the raglan st knit this.**



Raglan

Change to needle size 4, place 4 SM for the raglan increases like this: K 27 - **28** - 30 - **31** - 33 - **34** sts, place SM, k 27 - **28** - 30 - **31** - 33 - **34** sts with lace pattern (sleeve), place SM, k 54 - **56** - 60 - **62** - 66 - **68** sts, place SM, k 27 - **28** - 30 - **31** - 33 - **34** sts with lace pattern (sleeve), place SM, there are now 27 - **28** - 30 - **31** - 33 - **34** sts left of the rnd, k these.

Knit the body of the sweater with stockinette stitch and lace pattern on the sleeves. Increase for the raglan every other round like this:

- Rnd. 1 Knit stockinette or lace pattern to 1 st before SM, inc. 1, k1, move SM, k1, inc. 1. Rpt this at every SM, but not at the BOR.
- Rnd 2. Knit

Rpt these two rnds until you have inc. 14 - **18** - 20 - **23** - 27 - **32** times = 274 - **312** - 340 - **370** - 414 - **460** sts.

Continue knitting in pattern until the sweater measures 24 - **25** - 26 - **28** - 30 - **32** cm from the CO edge at the front.

Dividing sleeves and body

K 41 - **46** - 50 - **54** - 60 - **66** sts, place the next 55 - **64** - 70 - **77** - 87 - **98** sts on hold for the sleeve, CO 10 sts for the underarm (place a SM after 5 sts), k the next 82 - **92** - 100 - **108** - 120 - **132** sts, place the next 55 - **64** - 70 - **77** - 87 - **98** sts on hold for the sleeve, CO 10 sts for the underarm (place a SM after 5 sts), k the last 41 - **46** - 50 - **54** - 60 - **66** sts.

Body

= 184 - **204** - 220 - **236** - 260 - **284** sts. K until the body measures 22 - **26** - 27 - **27** - 27 - **27** cm from the underarm, OR 6 cm shorter than you want it in the front.

Back short rows

Now you will knit the sweater a bit longer in the back, this will make it approximately 4-5 cm longer.

Knit to BOR, k 5, turn, MDS. P to 5 sts after BOR, turn, MDS. K until DS, knit 5, turn, MDS, p until DS, P 5. Continue knitting/purling 5 past DS until you are at the SM under the arms. Remember to knit / purl the DS as one st.

Rib with slit

Change to needle size 3,5 and knit the rib like this:

Start at BOR. Dec 1 (You need an uneven number of sts). The first and last two sts are edge sts (I-cord). On the RS you knit them, on the WS you lift them off purl wise with the yarn in front. Knit rib - p1, k1. Start and end with a purl st after and before the edge sts,

Knit the ribbing for 6 cm. Bind off with tubular bind off.

YouTube video: <https://www.youtube.com/watch?v=48rugC1-aDc>

Sleeves

Place 55 - **64** - 70 - **77** - 87 - **98** sts on a small circular needle, 4mm and pick up 9, **10**, 10, **9**, 9, **10** sts for the underarm = 64 - **74** - 80 - **86** - 96 - **108** sts. Continue knitting the lace pattern around until the sleeve measures 39, **39**, 38, **36**, 35, **33** cm. The lace pattern will work itself into a spiral, so BOR will always move so it's better to ditch the SM, and look at the sts for where you are in the pattern.

K 1 rnd. Change to needle size 3,5 and k a rnd where you evenly dec 24 - **30** - 32 - **36** - 46 - **58** sts = 40 - **44** - 48 - **50** - 50 - **50** sts

K rib - k1, p1 for 5 cm. Place the sweater flat and find out where the outside of the sleeve is and split the rib here by dec 1 purl st. By doing this the rib will start and end with 1 k st on the RS. On the WS the first and last st will be purl sts, these will not be knit, just lift the st purl wise with the yarn in front. Knit in pattern for 5 more cm and bind off with tubular bind off. Sew in some decor buttons if you want.